

openIDL Node Deployment

Part 2

AWS setup - openIDL ops tools deployment

Agenda

- Last Session Recap
- Node Definition
- Hands on: AWS setup - openIDL ops tools deployment
- Next Steps

Last Session Recap

- openIDL Consortium
- openIDL Applications Overview
- openIDL Carrier Node Overview
- openIDL Carrier Node deployment steps
- Client CLI setup

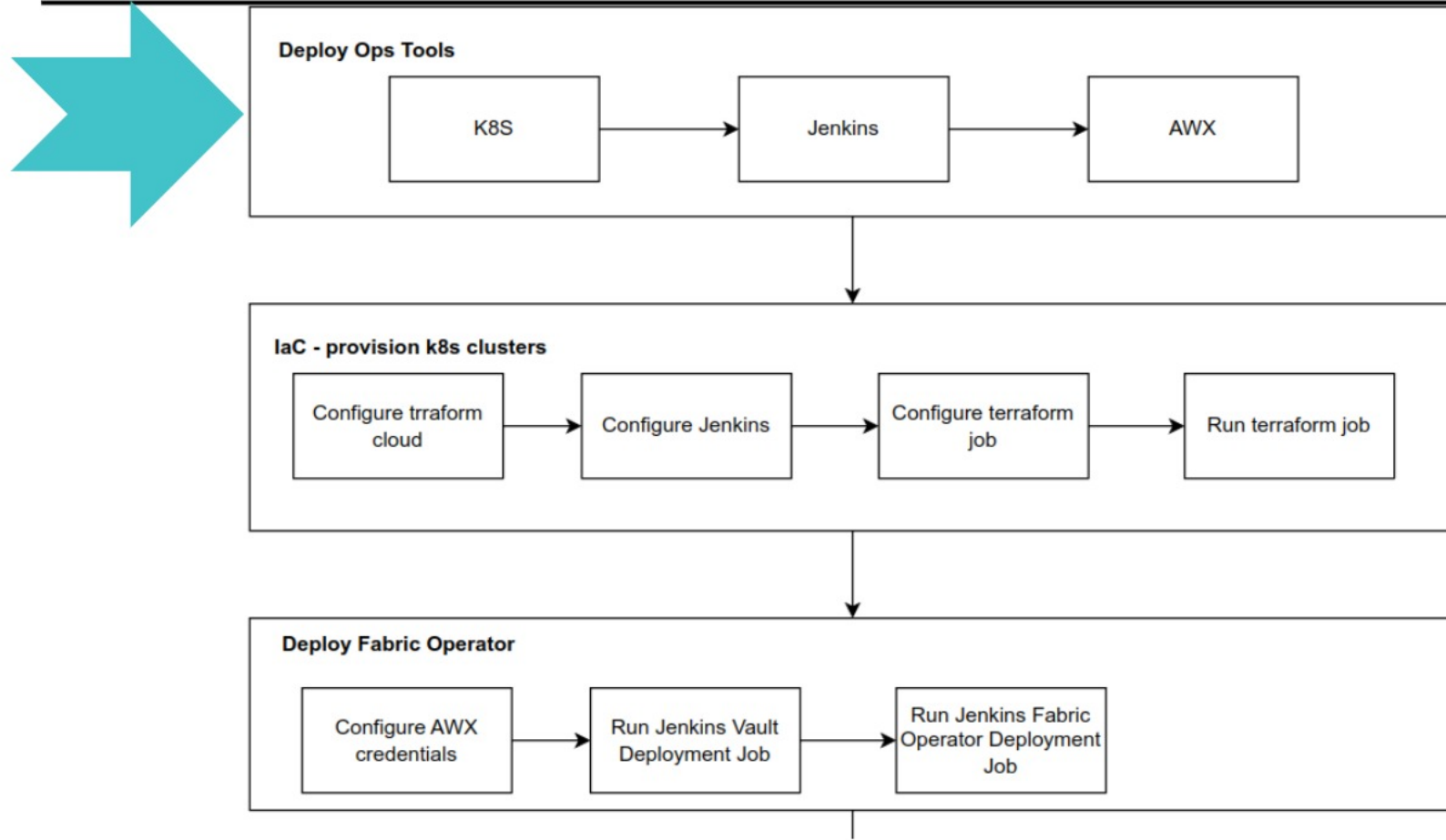
Node Definition

- **Organization ID/Name:** Unique organization identifier issued by openIDL
- **Environment:** test (dev/test/prod)
- **Domain:** The domain of the openIDL node endpoints (i.e. subdomain of the organization main domain)
- **Node type:** carrier (carrier/analytics/ordering)

Proper node definition is essential and must be well defined before starting the deployment. Any changes on the definition during/post deployment may require sizable additional effort.

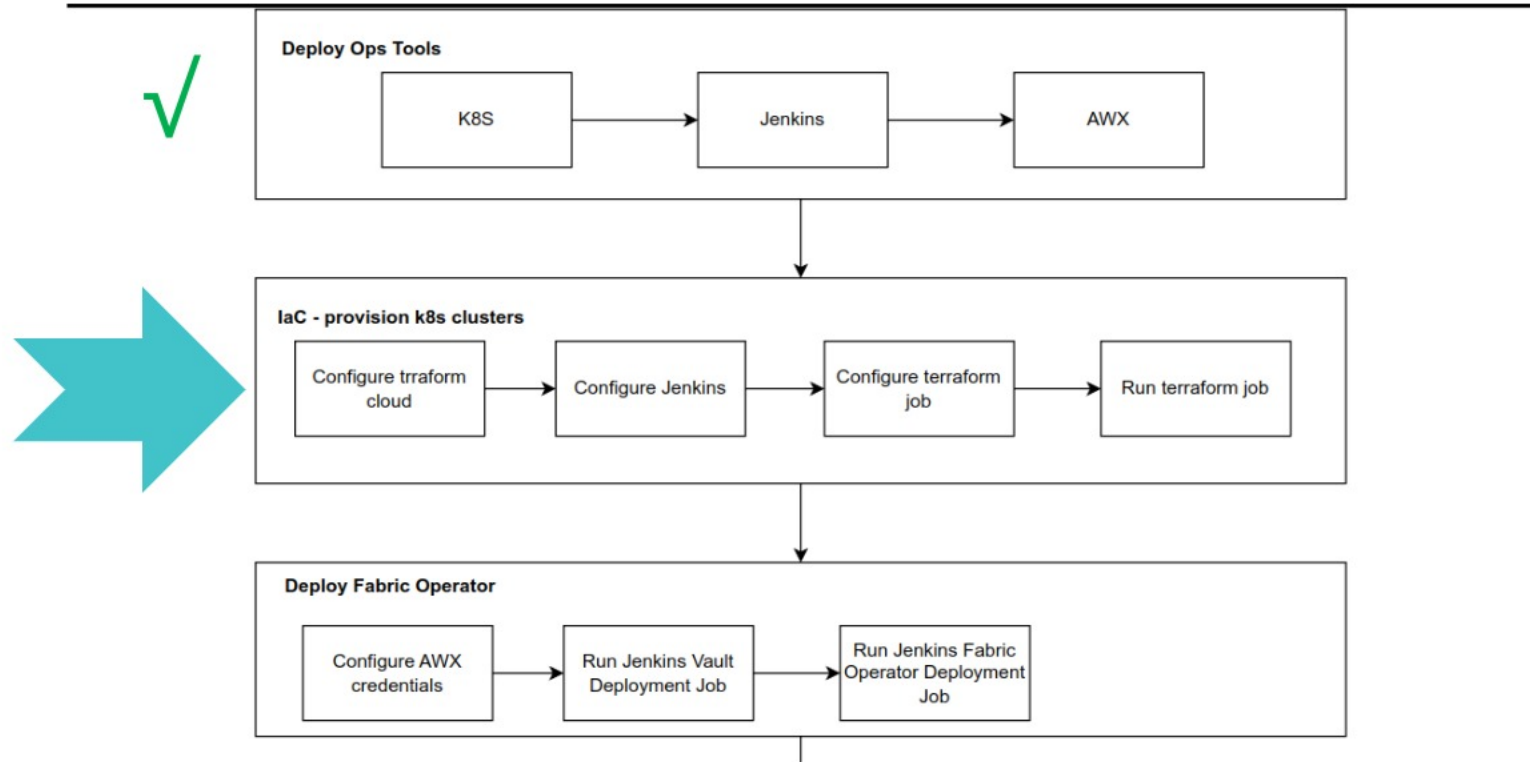
<https://wiki.openidl.org/display/HOME/1+-+openIDL+Node+Definition>

AWS setup - openIDL ops tools deployment



Next Step

AWS setup - openIDL k8s deployment



Links

Prerequisites

<https://wiki.openidl.org/display/HOME/Prerequisites+for+AWS>

Workshop WIKI

<https://wiki.openidl.org/display/HOME/openIDL+NodeBuilder+Workshop+2023>

openIDL Deployment Guide

<https://wiki.openidl.org/display/HOME/Node+Deployment>